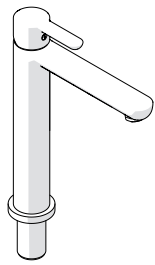


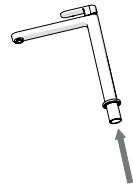
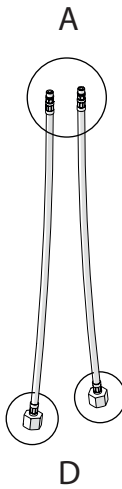
+



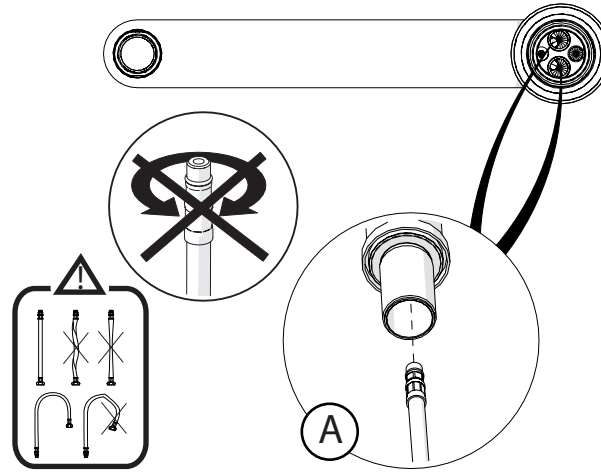
Not included / Non incluso / Non inclus / Nie zawarty / No incluido / Não incluido



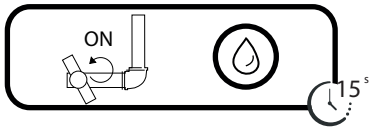
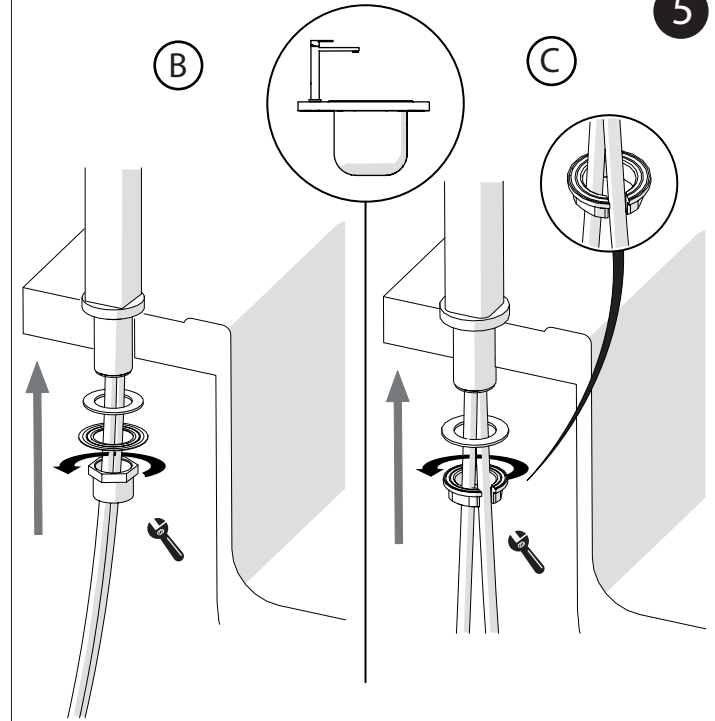
1



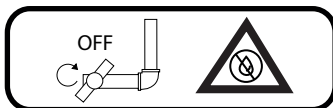
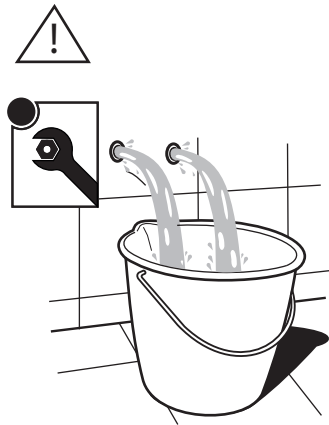
3



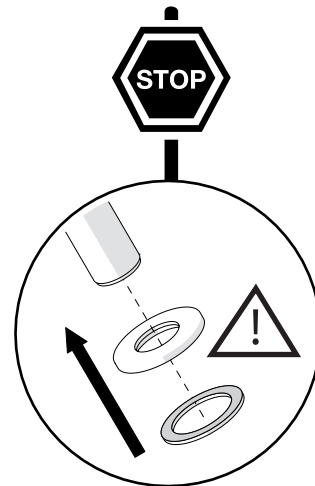
5



2

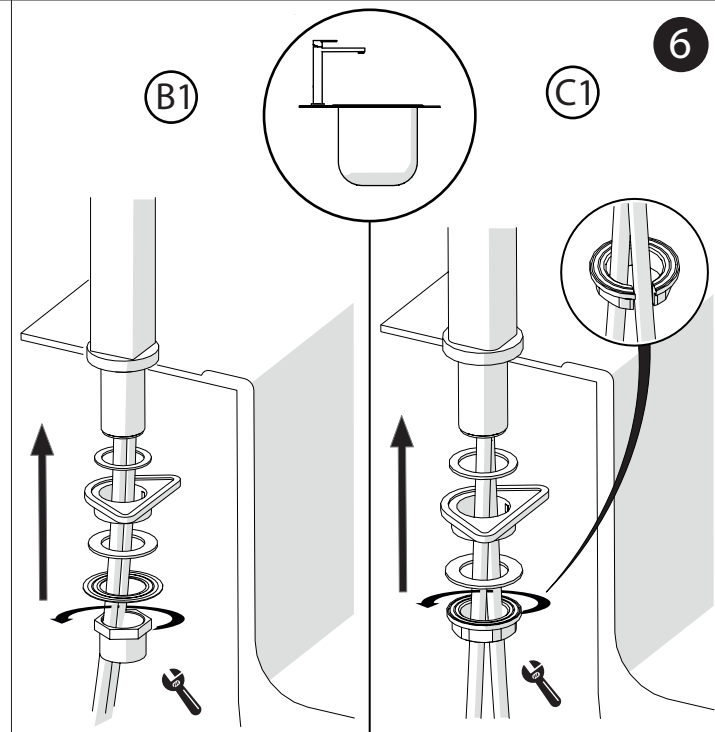


4



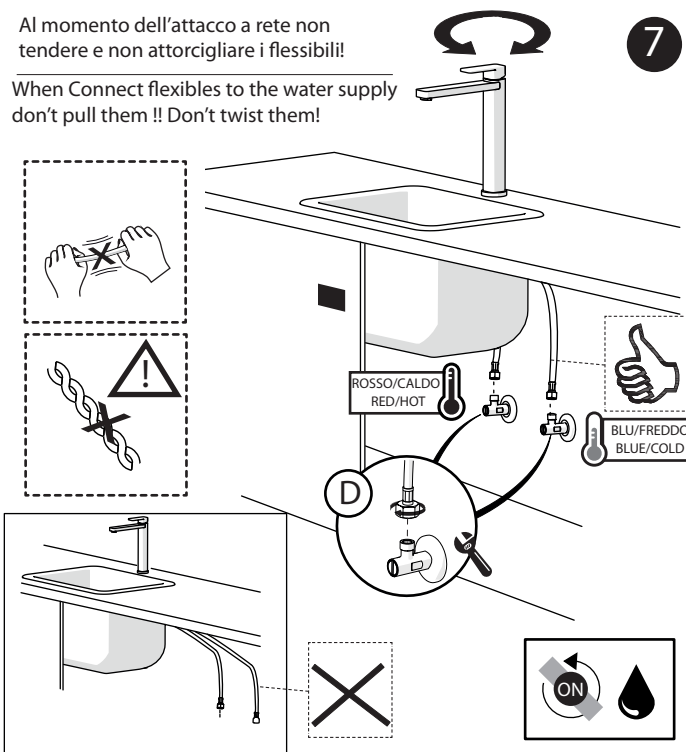
INSERIRE GUARNIZIONE  
PUT GASKET

6

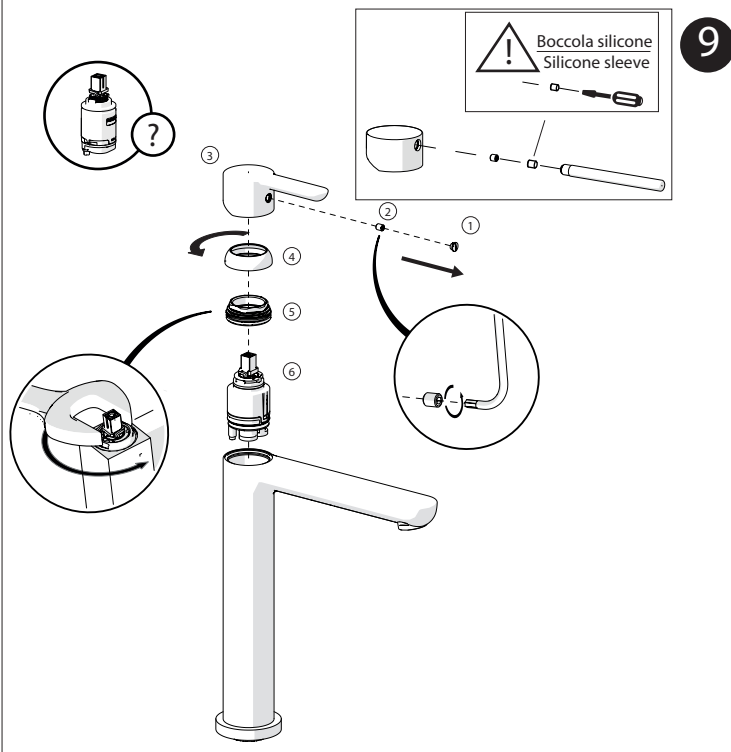


Al momento dell'attacco a rete non tendere e non attorcigliare i flessibili!

When Connect flexibles to the water supply don't pull them !! Don't twist them!



7

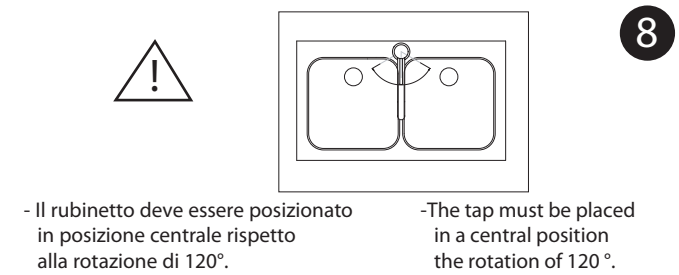


9

**NOBILIS®**  
The Best Technology for Water



713

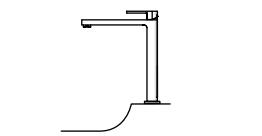


8

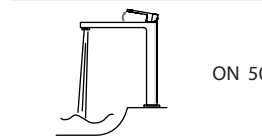
- Il rubinetto deve essere posizionato in posizione centrale rispetto alla rotazione di 120°.

-The tap must be placed in a central position the rotation of 120°.

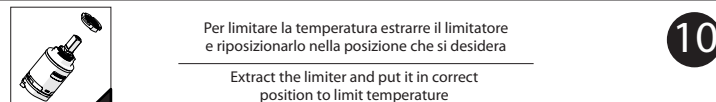
-50%



ON 50%

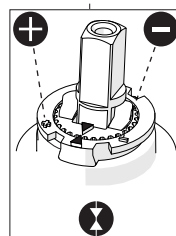
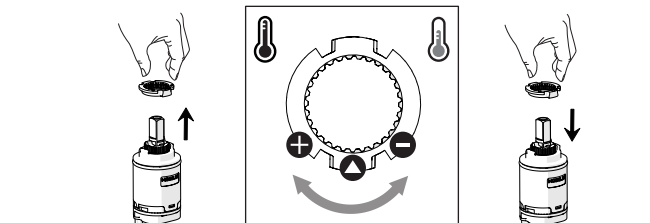


ON 100%

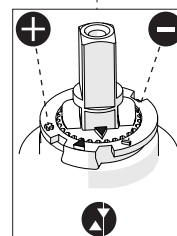


10

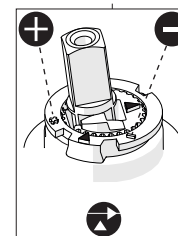
Per limitare la temperatura estrarre il limitatore e riposizionarlo nella posizione che si desidera  
Extract the limiter and put it in correct position to limit temperature



Nessuna limitazione di temperatura  
No limitation of temperature



Limitazione parziale di temperatura  
Partial limitation of temperature



Massima limitazione Solo acqua fredda  
Maximum position Only cold water

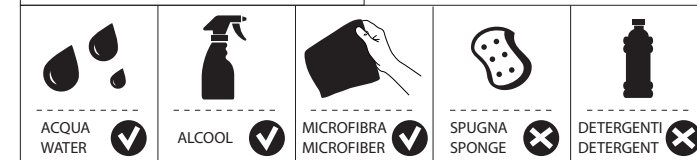


www.grupponobili.it

PRIMA DI INIZIARE / BEFORE STARTING



PULIZIA / CLEANING



IISTRO0713#--STD



REV4.03/2018

Достоверную информацию уточняйте на [santehnica.ru](http://santehnica.ru).